

2060 Knoll Drive, Ste 100  
Ventura, CA 93003  
Tel (805) 658-2628



150'

O  
S  
R  
V  
  
C  
l  
e  
a  
n  
  
O  
c  
e  
a  
n

**OSRV Clean Ocean**

**Main Particulars**

Length, Overall	155'-0"
Length, BP	128'-0"
Beam	36' - 0"
Depth	11' - 6"
Light Draft	5' - 0"
Loaded Draft	9' - 9"
Summer Freeboard	0'-0"
Lightship	390 LT

**Capacities**

Fuel	39,119 usg
Liquid Mud*	1,195 bbl
Methanol*	1,097 bbl
Potable Water	14,250 usg
Drill Water	59,312 usg
Recovered Oil	1,400 bbl

**Cargo Deck**

Tonnage	365 LT
Clear Area	97' x 30' (2,910 sf)

**Machinery**

Main Engines	(2) Detroit 8v149TI
Brake Horsepower	1520
Reduction Gears	Twin Disc MG-520
Gear Ratio	5:1
Propellers	(2) Bollinger Stainless 62x54
Rudders	2 Spade
Generators	(2) 75 kw
Bow Thrusters	Schottel 300 hp
Liquid Mud Circulation	Magnum 5x4x14

**Special Equipment**

Crane	18 Ton
Windlass	150 ft MS
External FIFI	1250 gpm
Number of Monitors	1

**Performance**

Maximum Speed	12 Knots
Cruising Speed	10 Knots
Maximum Fuel Consumption	60 usg/hr
Cruising Fuel Consumption	55 usg/hr

**Electronics and Controls**

Depth Recorder	Datamarine
GPS	Sitex
Radar's	(2) Furuno
SSB	150 Watt
VHF	2

**Accommodations**

Cabins/Berths	5 Cabins/16 Berths
Officers	2
Crew	3
VIP	Stateroom
Passengers	16
Lounge/Mess	7/12

**Tonnage**

GRT	99 US Tons
NRT	50 US Tons

**Oil Spill Response Equipment**

- (1) RHIB Vessel
- (2) Lori 4-Brush Skimming System
- (2) Stationary Skimmers
- (3) DOP 250 Transfer Pumps
- 1,500' Kepner 24" Ocean Boom
- 2,000' 43" Containment Boom
- 1,000 Gal Dispersant

**Documentation**

Flag	United States
USCG	USCG Sub L, OSV, ABS Int Load Line
Year Built	1998
Offical Number	1077091
Builder	Bollinger Shipyard

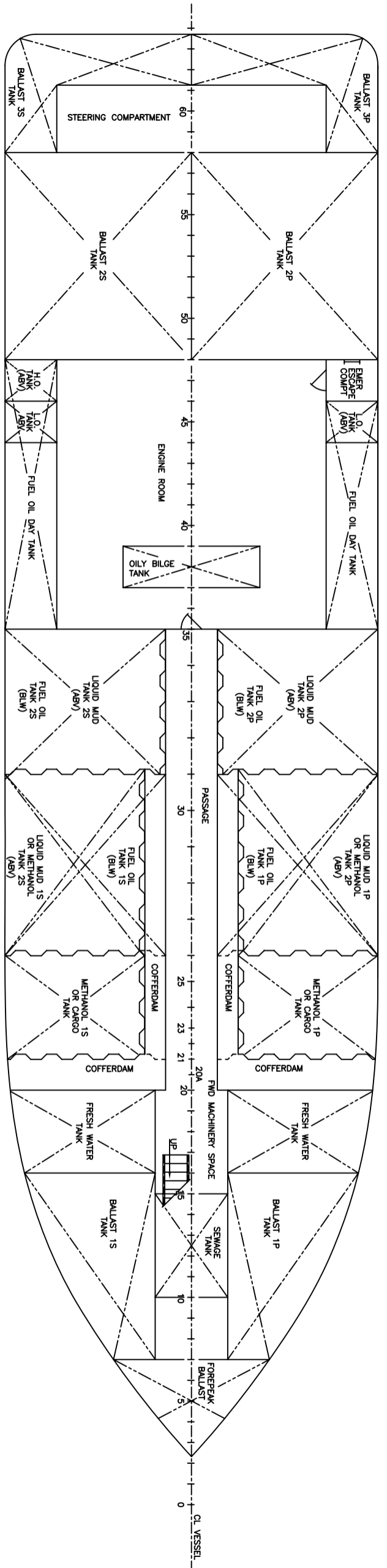
[www.metsonmarine.com](http://www.metsonmarine.com)

[e-mail thanasi@metsonmarine.com](mailto:thanasi@metsonmarine.com)

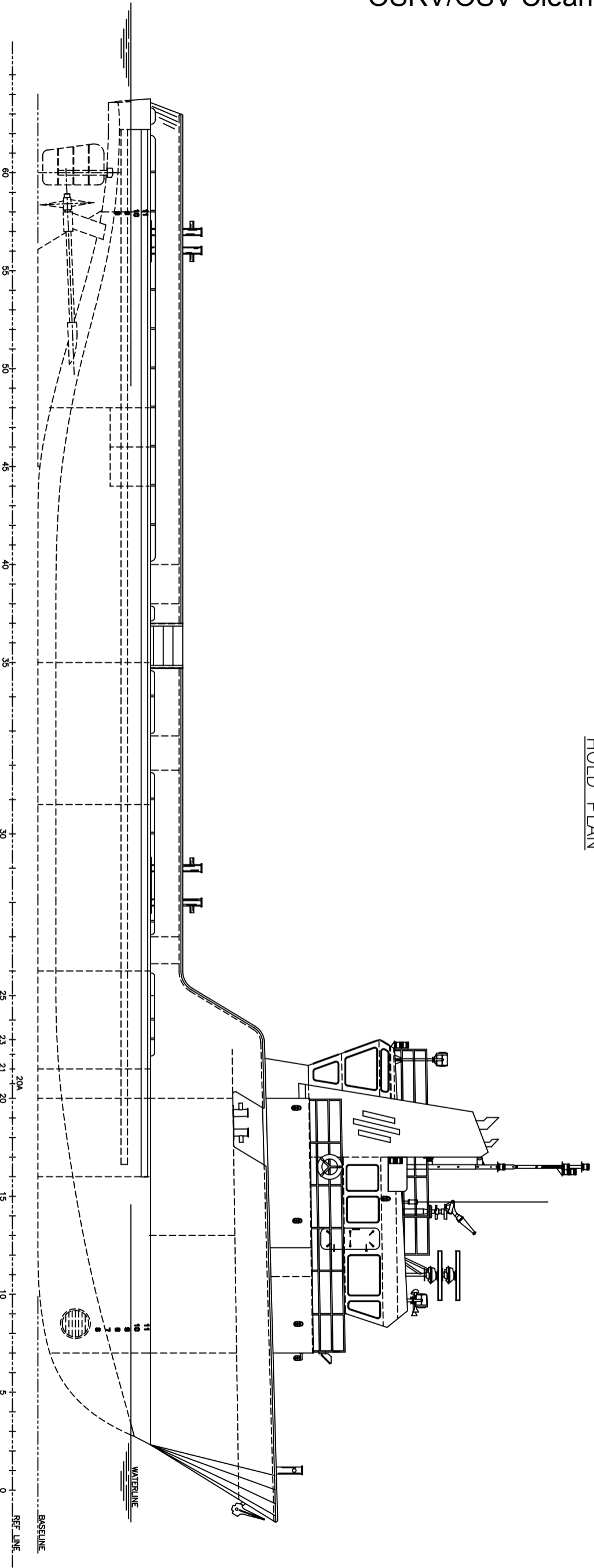
Specifications and capacities subject to change without notice.

\*Liquid Mud and Methanol Tanks are deactivated and certified as Recovered Oil Storage Tanks

# OSRV/OSV Clean Ocean



HOLD PLAN



PROFILE